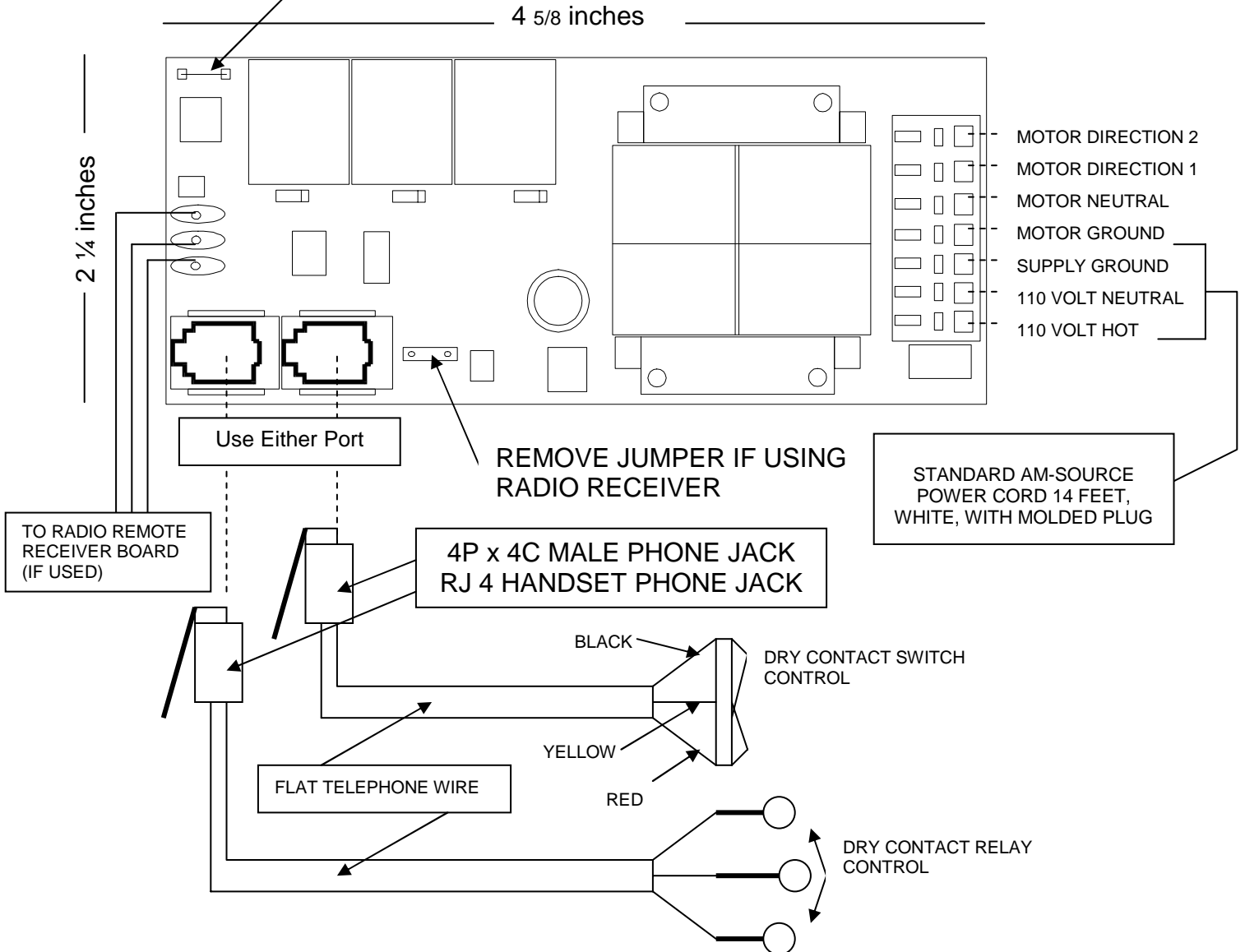


## R-1R RELAY INTERFACE

WITH RADIO REMOTE CONTROL ONLY  
 REMOVE JUMPER TO ACTIVATE SLO-TILT  
 (FOR BLINDS ONLY - IF OPTION IS DESIRED)



The Am-Source R-1R Relay Interface is a Control Board that performs a multitude of functions. The board fits unseen within the headrail or in an enclosure for Roller Shade applications. Its primary function is to control all Am-Source supplied 110 Volt A.C. motors by means of dry contact control switching whether manual wall-switch or by integration with Computer Control, Home Theater, and Home Automation Systems. The R-1R Control Board can be utilized as a stand-alone control as well as in conjunction with the Am-Source Radio Remote System Receiver Board. The R-1R Relay Interface is able to control a single motor or several motors when boards are linked by means of dry contact control wiring. The Board activates an open-close / up-down feature as well as the "slo-tilt" function on blinds when used with the Am-Source Radio Remote Receiver Board.

See: **RJ 4 Telephone Connector Wiring**

See: **R-1 B/H Radio Remote Control**