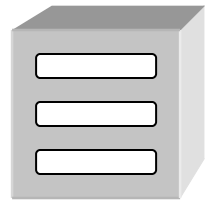
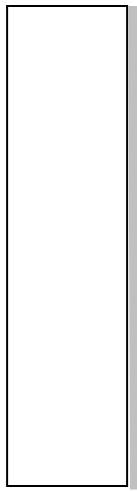


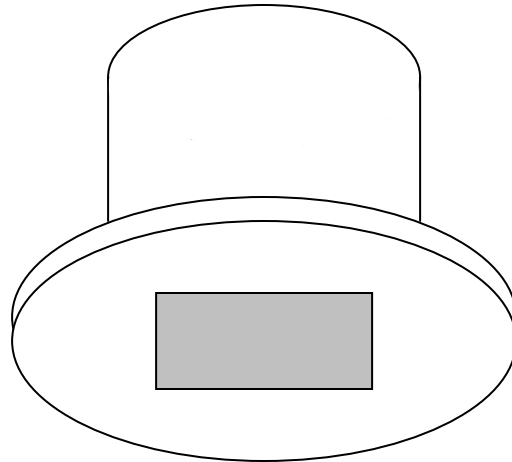
How to Thread Buckle



Buckle

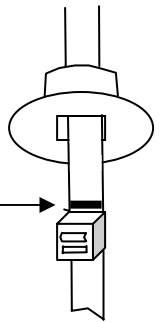


3/32"
Tape

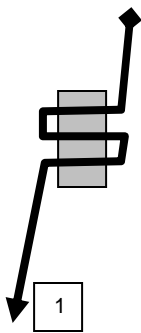


Collar

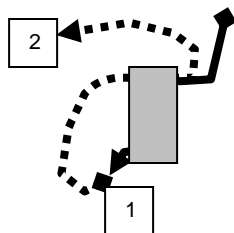
Tapes are rolled on reels... the tape is then routed thru the product and exists thru a bottom rail or ring. Each tape is marked with a reference line near the bottom of the tape which represents a level line (equal distance) for each reel. Whenever possible a collar is used first and then the tape is threaded thru the buckle (this helps lock the tape in place).



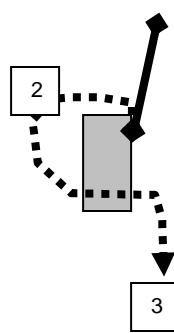
Threading Step 1



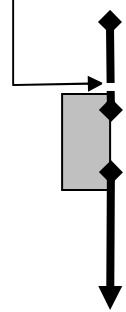
Threading Step 2



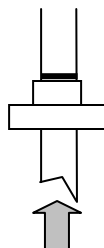
Threading Step 3



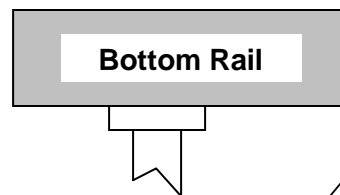
Done



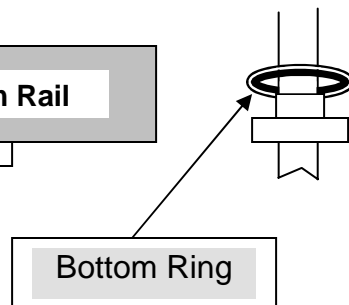
Insert buckle
into Collar



Bottom Rail



Bottom Ring



For more information contact:

Am-Source International 1550 Old Rand Road, Unit A Wauconda, IL 60084 Phone: 800.876.7367